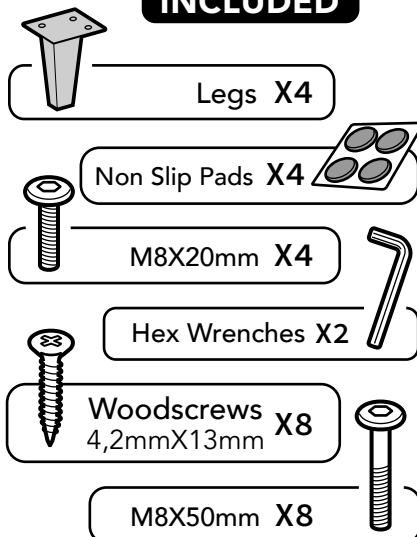


LUONTO[®] – DOLPHIN SOFA ASSEMBLY

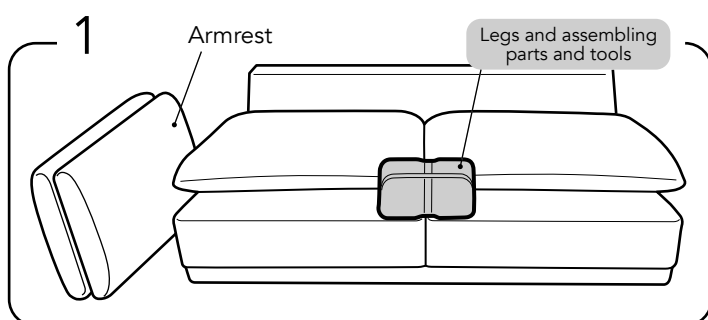
INCLUDED



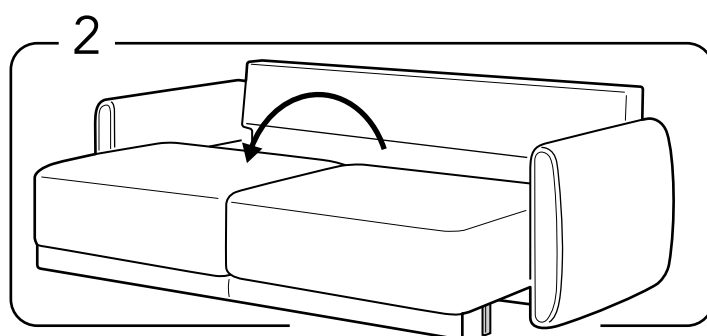
ATTENTION!

Sofa ships in 2 packages : **x1 Sofa with cushions**
x1 2 Arms in the Package

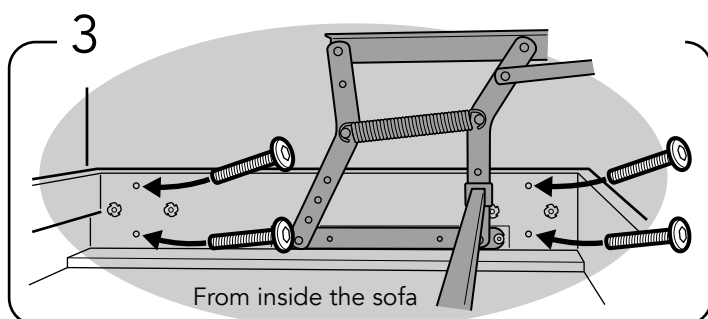
2-Persons
are required



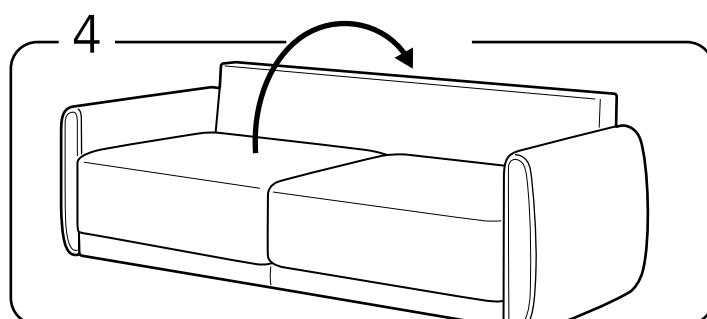
Open the package and find out legs and assembling parts and tools.



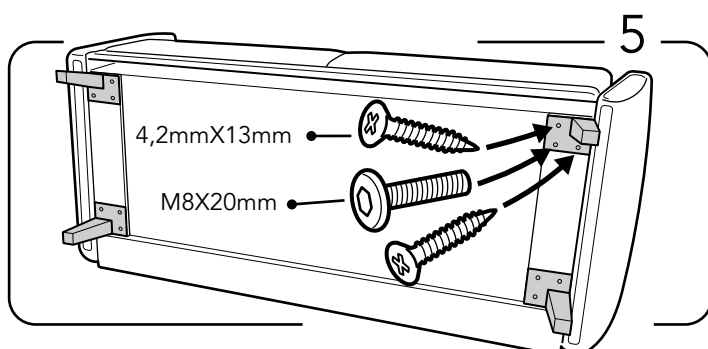
Place left and right armrest in place, and open the mechanism completely.



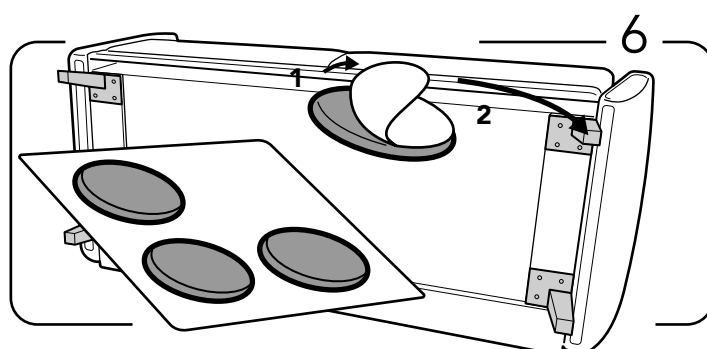
Fasten sofa frame to left and right armrest with a 4 (M6 50 mm) bolts in each side.
All bolts fastened from inside out!



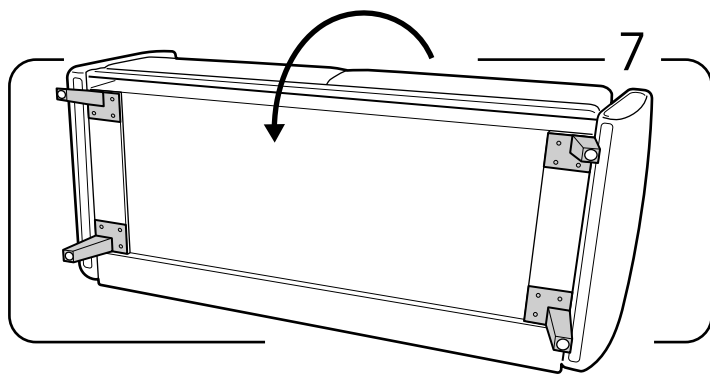
Turn the sofa to the backside.



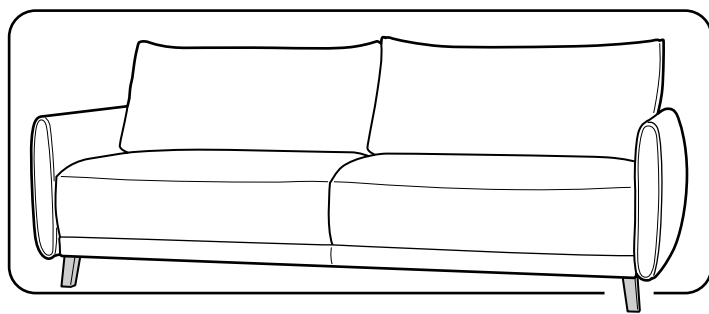
Attach each legs with the M8x25mm bolt to align the metal in place then use two screws on each leg.



Insert the non slip furniture pads to the 4 legs.



Carefully, turn the sofa upright and ensure each of the legs are installed properly.



This is how the final product should look like.